

National Charity League, Inc.®

IMPACT REPORT



2025

OUR CENTENNIAL YEAR

TABLE OF CONTENTS

ANNUAL RESULTS & IMPACT	PAGES 3 - 4
MAKING HEADLINES	PAGE 5
CELEBRATING INNOVATION,.....	PAGE 6
PROJECTS THAT MAKE A DIFFERENCE	PAGES 7 - 8
MEMBERS IN ACTION	PAGE 9
NATIONAL DAY OF SERVICE	PAGE 10
PHILANTHROPY PARTNERS	PAGES 11 - 12
GROWTH	PAGES 13 - 14
FINANCIALS & HOW WE INVEST	PAGES 15 - 16
EVENTS, PROGRAM & TRAININGS	PAGE 17
FOREVER NCL	PAGE 18
HONORING 100 YEARS OF IMPACT	PAGES 19 - 20
LOOKING AHEAD & SPONSORS	PAGES 21 - 22
DONORS	PAGES 23 - 26

MESSAGE FROM CEO & PRESIDENT

Dear Members and Friends of National Charity League,

This year marks an extraordinary milestone in our history, our Centennial Celebration! For 100 years, National Charity League (NCL) has been a powerful force for good, empowering mothers and daughters to create lasting change in their communities.

We are so proud to be part of an organization that not only inspires philanthropy, culture and leadership, but also strengthens one of life's most meaningful relationships—the bond between mothers and daughters. Through NCL, grandmothers, mothers, daughters and even great-granddaughters have shared the gift of giving back together. And through their time, creativity and compassion, NCL members have helped local communities thrive for nearly a century.

Today, our impact is greater than ever. With over 320 chapters in 32 states and growing, we continue expanding nationwide to bring the transformative NCL experience to more mothers and daughters. During 2024-2025, our members contributed over three million volunteer hours to more than 6,000 local philanthropy partners, creating a \$107 million fiscal impact—surpassing our \$100 million goal!

Beyond our local partnerships, we are proud to continue our collaborations with national philanthropies, such as the Alzheimer's Association, American Heart Association, American Red Cross, Operation Gratitude and Feeding America. Together, we are amplifying our collective strength and expanding the reach of our service.

To our 230,000 members and alumnae, our nearly 200 national volunteers and our 28 dedicated staff members - thank you. Your leadership, creativity and tireless dedication are what make this organization so extraordinary.

Just look at what we've accomplished - and imagine what's still to come - as we celebrate the next century of empowering mothers and daughters and the continued impact we will make, together.

With gratitude and pride,



A handwritten signature in black ink that reads "Nancy Dean".

Nancy Dean
CEO

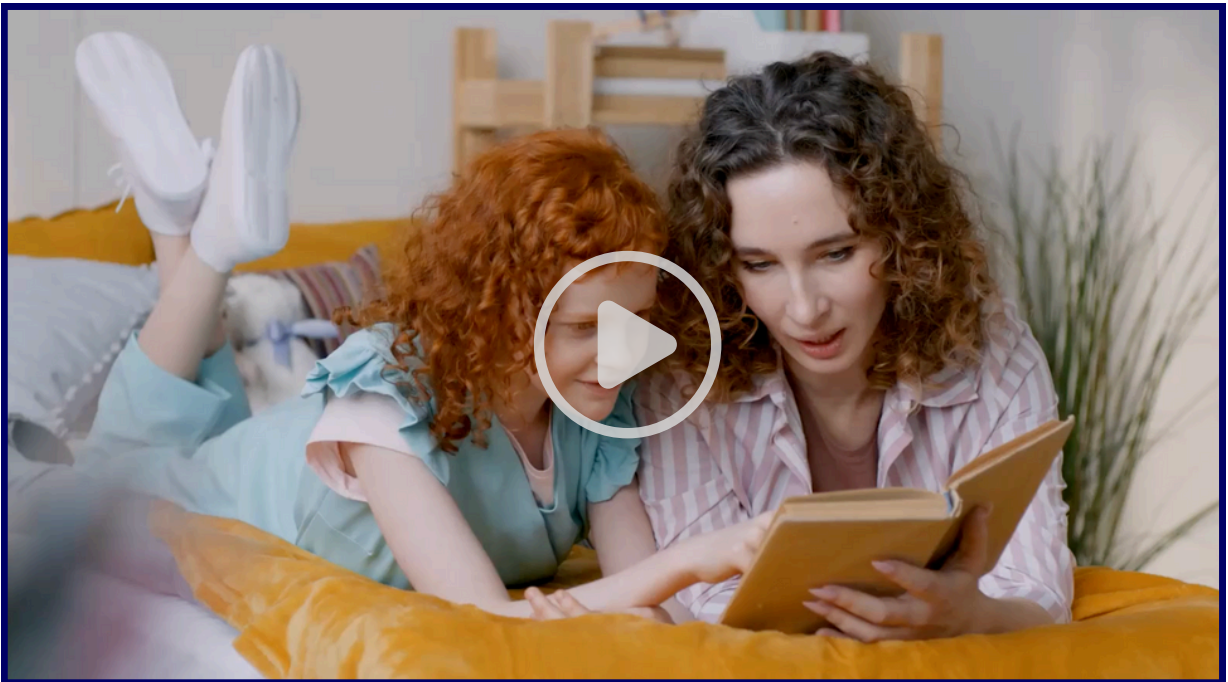


A handwritten signature in black ink that reads "Abby Ray".

Abby Ray
NCL, Inc. Board President

ANNUAL RESULTS

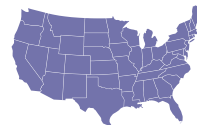
WE SERVE. WE LEAD. WE LEAVE A LEGACY



230,000+ Members
& Alumnae



6,000+ Charities
Served



320+ Chapters
in 32 States



\$568,000+ of In-
Kind Donations

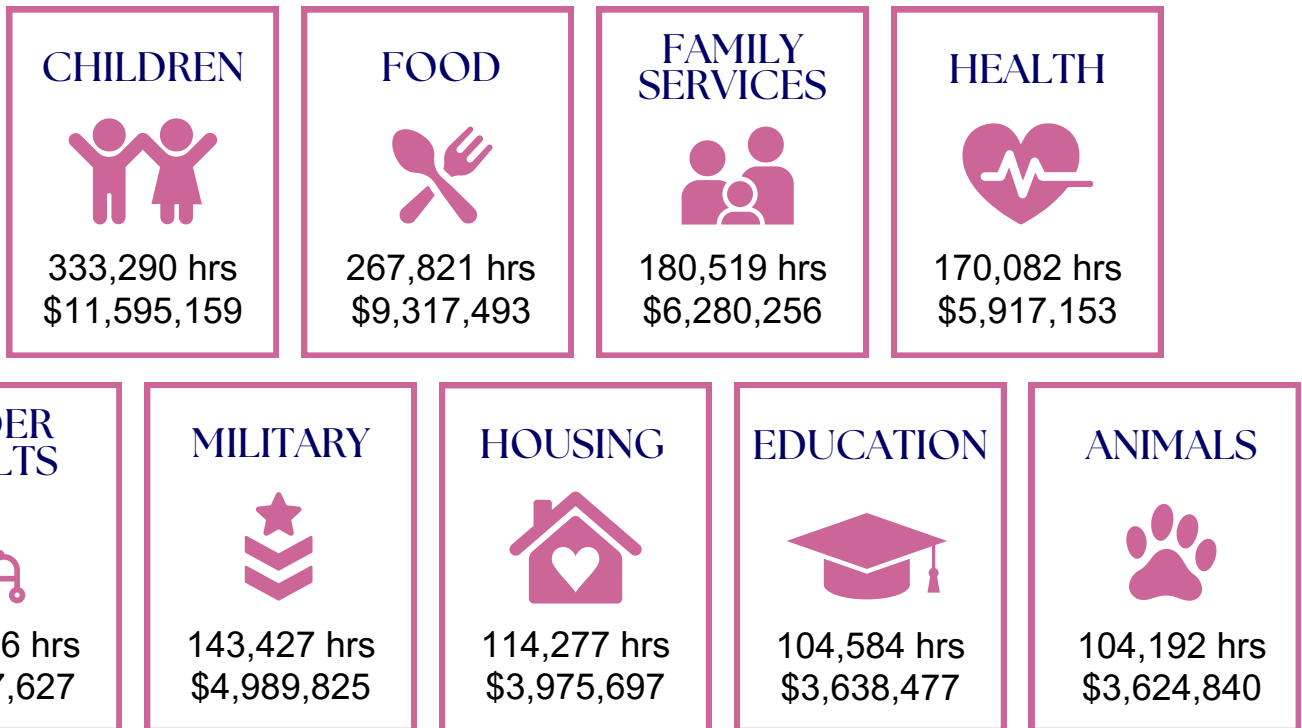
OUR IMPACT

As a multi-generational philanthropic organization of mothers and daughters, we donate more than three million hours annually to over 6,000 charities. We support and serve communities in partnership with local and national nonprofits.

MORE THAN 3 MILLION ANNUAL PHILANTHROPIC HOURS = \$107+ MILLION NATIONAL FISCAL IMPACT*

TOTAL HOURS BY TOP CATEGORIES

Charities are categorized by their purpose and need, with total hours and corresponding fiscal impact for each category outlined below.



**Fiscal impact calculated using the Independent Sector value of a volunteer hour (\$34.79).*

MAKING HEADLINES



[CLICK TO READ](#)

THE SANDWICH PROJECT

Driven by purpose and the power of community, 145 mothers and daughters from the East Cobb Chapter gathered for their 3rd Annual Impact Day, where they assembled a record-breaking 2,099 sandwiches for The Sandwich Project. All sandwiches were delivered the next day to homeless shelters and shelters for women and children across Metro Atlanta, helping fight food insecurity one meal at a time.



[CLICK TO READ](#)

“BAG BEE” EVENT SUPPORTING LOCAL BREAST CANCER PATIENTS

The Magnolias Chapter partnered with Canopy Cancer Survivorship Center for its 12th Annual “Bag Bee” event, where 68 volunteers handcrafted 100 tote bags to support local breast cancer patients going through chemotherapy.



[CLICK TO VIEW](#)

BEQUALS - A MENTORING PROGRAM DEVELOPED BY NCL MEMBER, NORA

Nora, a member of the South Forsyth Chapter, saw a need and turned it into something extraordinary! After volunteering at GiGi’s Playhouse Atlanta alongside her mom, Nora was inspired to launch bEquals, a mentoring program that fosters meaningful connections between teens with Down syndrome and their neurotypical peers.

NCL is growing its presence and impact across the country. Our chapters and members are recognized for meaningful service and leadership, and our social media channels highlight their inspiring work. Follow us to see how NCL members are making a difference!



CELEBRATING INNOVATION

LINDA MARTENS
**INSPIRE
INNOVATION**
National Charity League, Inc.®

In 2022, NCL set out to establish a fund, dedicated to supporting Ticktocker®-led projects that exemplify creativity, commitment and service-driven leadership. The fund aimed to encourage Ticktockers to design bold, innovative solutions that address real challenges in their own communities.

The Ticktocker Inspire Innovation Fund was established to give young women the tools and opportunities they needed to lead and make a lasting impact. In honor of Linda, Harlen Martens generously offered a matching grant of up to \$250,000, to be fulfilled by the end of 2025. Due to the committee's tireless efforts and our generous supporters, we not only reached, but exceeded, our goal by December 2024.

At our Centennial Celebration, we proudly renamed the fund the **Linda Martens Ticktocker Inspire Innovation Fund**—a lasting tribute to a woman whose compassion, dedication and service have shaped countless lives and whose remarkable legacy continues to empower future generations of Ticktockers.

THANK YOU to the committee members—Lynne Zuckerman (Chair), Michele Crabtree, Robin Doherty, Denise Lilley, Linda Martens, Wendy Ridderbusch, Dara Wilk and Nancy Dean.



Linda's legacy will continue to uplift and inspire future generations of Ticktockers—encouraging them to dream big, lead with confidence, and innovate with purpose.

About Linda Martens

Linda Martens has such a long and rich history within our organization. She started as a Ticktocker with her mother in the Fullerton Chapter, and then years later, served as a Patroness in the Wildflowers Chapter with her daughter Meg. Over time, she's held many different positions and roles on the national level, including serving as one of our former National Board Presidents. Today, Linda continues to serve as the Chapter Support Senior Lead on our national volunteer team.

If we are true to ourselves, we will keep leadership development for our Ticktockers front and center. They are our future and our legacy. Listen to their VOICE and let them LEAD!

-Linda Martens

PROJECTS THAT MAKE A DIFFERENCE

This past year, four outstanding initiatives led by our Ticktockers received grants from the Linda Martens Ticktocker Inspire Innovation Fund, each demonstrating the power of young women to transform communities, foster leadership and make a lasting impact.



SPORTS FOR ALL SOUTH BAY CHAPTER, CA

Project: Mother-Daughter Pickleball Tournament
Purpose: Support K-5 schools in Greater Los Angeles area, where 72% of students live below the poverty line.
Impact: Raised money to gift 48 schools new sports equipment. Hundreds of students gained access to quality physical education with the tools to stay active, healthy and engaged!



DEAF AWARENESS DAY RIVERSIDE CHAPTER, CA

Project: Games, Art Workshops and ASL Experiences
Purpose: Raise awareness of the Deaf community, as Riverside is one of only three cities in California with a hearing-impaired/deaf specialty school.
Impact: Bridged gap in understanding and communication by connecting with the Deaf community. Fostered awareness, inclusivity and appreciation of Deaf culture.



THE NCL TINY HOME PROJECT LAKE WASHINGTON CHAPTER, WA

Project: Build & Paint a Tiny Home
Purpose: Provide safe, long-term housing for unhoused residents in Seattle.
Impact: Constructed and painted a durable tiny home built to last 20 years. Helped individuals experiencing homelessness transition into permanent housing, offering stability, dignity and a fresh start.



TEACHING STEM WITH SPARKLES

CHERRY BLOSSOM CHAPTER, VA

Project: DIY Soap Workshops in Partnership With She Believes in Me, Hope Center and Women Giving Back

Purpose: Support women and girls with little to no resources —many of whom arrive with only the clothes they are wearing.

Impact: Promoted creativity, STEM learning and the importance of hand hygiene through an engaging, hands-on experience that fostered confidence and self-expression. Empowered women and girls to gain new skills, inspiring them to pursue education, independence and a more secure future.

LINDA MARTENS
INSPIRE
NOVATION
National Charity League, Inc.®

At our Centennial Celebration, our Ticktockers proudly showcased their projects. Hear from one of the girls about how her project taught her about philanthropy, and how supporting this fund helps build pathways for impact and leadership.



“Like our mothers, we want to be the women who help other women.”



GIVE TODAY. EMPOWER TOMORROW.

If these projects inspire you and you'd like to support our girls in continuing their meaningful impact, please consider making a donation.

[DONATE](#)

MEMBERS IN ACTION

SUPPORTING OUR COMMUNITY IN THE WAKE OF DEVASTATION

In January 2025, devastating wildfires swept through Pasadena, Altadena and Malibu, California, leaving behind destruction, displacement and heartbreak. These fires, followed by devastating mudslides, have deeply impacted countless families across the region, including several of our NCL members.

As a community grounded in compassion and service, our chapters quickly mobilized to support those affected, offering help as they work toward rebuilding and recovery.

SERVING WITH HEART

In response to the LA wildfires, NCL member Reagan Strazzeri founded Hearts in Action. Through her dedicated volunteer work and unwavering commitment to serving those affected, she has demonstrated true leadership, compassion and initiative, embodying NCL's core values and what it means to be an NCL member.



[CLICK TO VIEW](#)



\$67K+

In-Kind Donations

12+

Local Partner Collaborations Supporting Donations and Relief Efforts

14+

Communities supported by NCL Chapters

NATIONAL DAY OF SERVICE

This year's National Day of Service, held on January 11, 2025, was a success! In recognition of Martin Luther King Jr. (MLK) Day of Service and one of Dr. King's top priorities—literacy—our members responded to local community needs by organizing book drives. We are so proud of our 7th grade members for organizing and leading their book drives. These girls have proved that they are learning the very leadership skills that NCL is committed to teaching.

BOOK DRIVE IMPACT

Top 5 Chapters:

1. San Tan - 5,476 books
2. Gateway - 4,724 books
3. Brazos Belles - 4,084 books
4. Cherry Blossom - 4,000 books
5. Central Bucks - 3,820 books

Honorable Mention:

Spirit of St. Louis - 3,818 books (only in their second year as a chapter!)

Congratulations to all of our chapters for donating an amazing **200,486 books** this year alone bringing our grand total to **500,486** over the last 3 years!



TURNING PAGES INTO PURPOSE

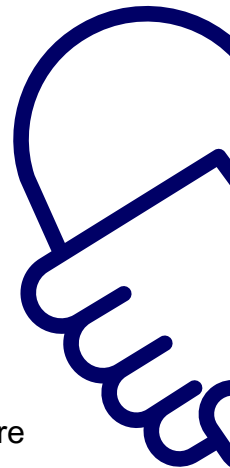
The Post Oak Chapter collected over 2,300 books on January 11, in honor of NCL's National Day of Service Book Drive. These books were donated to Family Point Resources, Literacy Now and the little libraries at William P. Hobby Airport. Watch the video to discover other meaningful activities the Post Oak Chapter took part in during NCL's Day of Service.

[CLICK TO VIEW](#)



PHILANTHROPY PARTNERS

We collaborate with well-established philanthropy partners, allowing us to further expand our impact by supporting organizations that directly strengthen our communities and enrich the lives of those they serve. Through these partnerships, we're able to contribute meaningful time, resources and compassion where it's needed most, ensuring our service creates lasting, positive change.



NATIONAL PARTNERS



23,177 hrs
\$806,328

This organization is invested in Alzheimer's care, advocacy and research. We offer support through their Walk to End Alzheimer's signature event and hosting community forums.



American Heart Association®

15,377 hrs
\$534,966

They create awareness, education and training for cardiovascular health. Members join their Heart Walk, share Go Red for Women awareness and participate in Hands-only CPR training.



American Red Cross

12,217 hrs
\$425,029

In 1925, they were our very first philanthropy partner! We serve as Blood Donor Ambassadors and support their many disaster response initiatives, such as fire safety education and the Missing Maps project.

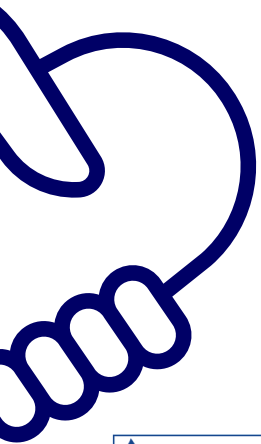


99,297 hrs
\$3,454,543

Their focus is on volunteer support of military, veterans and first responders. The Sleep Tight program was started by an NCL member to create greeting cards and pillowcases with messages of gratitude for our military.

TOP PHILANTHROPY PARTNERS

Our chapters collectively serve more than 6,000 local organizations. While the philanthropies listed below are national organizations, our chapters work directly with their local branches rather than through a national partnership. These are the causes our chapters support most, reflecting the unique needs of our communities and the passions of our members. Together, we're driving positive change and creating lasting impact!

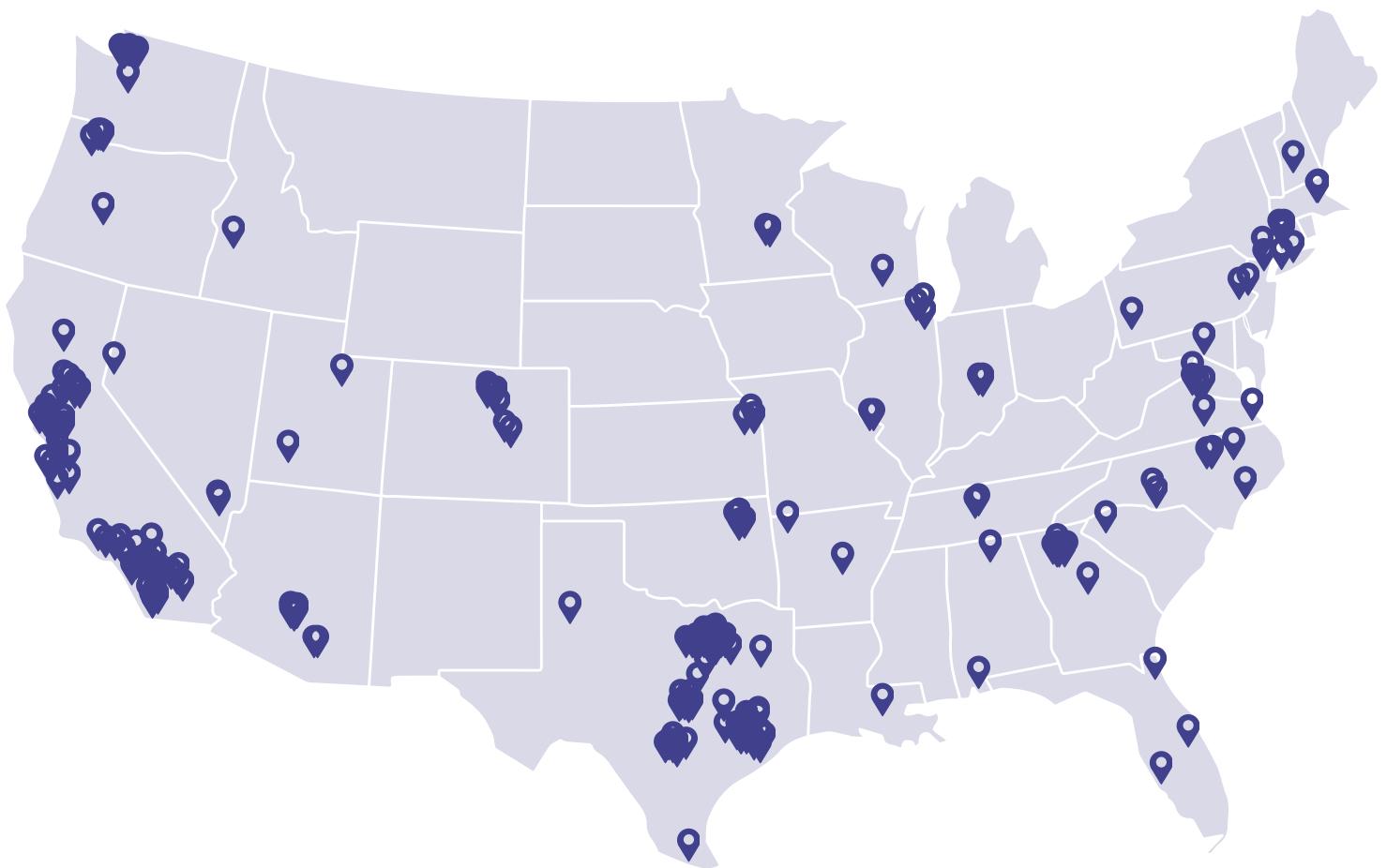


We believe that building a stronger community requires collaboration, commitment and compassion. That's why our local philanthropies are at the heart of what we do. Thank you to our partners who make it possible for us to give back and touch lives!

GROWTH

RAPID GROWTH

Over the past decade, NCL has experienced remarkable growth. From 2015 to 2025, the number of chapters and members has more than doubled, reflecting the organization's increasing impact and reach.



52% membership growth



58% chapter growth



Average of 230 members per chapter



Jasmine Smith, President of the Eno River NC Chapter, shares how starting her chapter has been a powerful reminder that *“when women come together around shared values, we don’t just make an impact—we leave a legacy.”*

NEW GROWTH

The demand for more NCL chapters is reflective of the reputation and success of our established chapters and the growing need in communities for our philanthropic services. During the 2024-2025 year, we activated 12 chapters and chartered 11.

NEWLY ACTIVATED CHAPTERS

Dripping Springs TX
 Huntington Helpers NY
 Hand in Hand TX
 Eno River NC
 East Dallas
 Texas Poppies
 Gardenias of Garden City NY
 Bethesda MD
 Marvin NC
 West Nashville
 Seashell Sisters of Virginia Beach
 Noblesville Indiana

NEWLY CHARTERED CHAPTERS

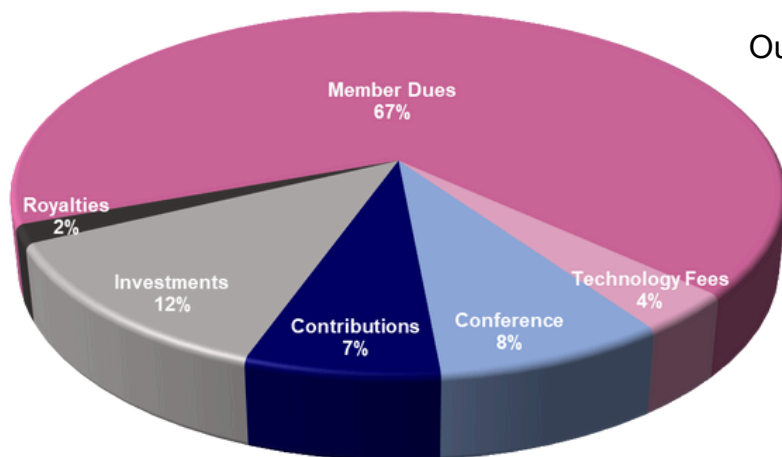
Spirit of St. Louis
 Pittsburgh Linxx
 Prosper TX
 Atlanta Azaleas
 Greater Friendswood TX
 Jacksonville
 SoWilco Nashville
 Fort Worth Cowtown
 Comal Texas
 Winnetka IL
 Texas Starlight

FINANCIALS

We believe in practicing good governance, in ethical management practices and in accountability. We perform an annual audit with an external auditor to assess the organization’s accuracy, compliance and effectiveness.

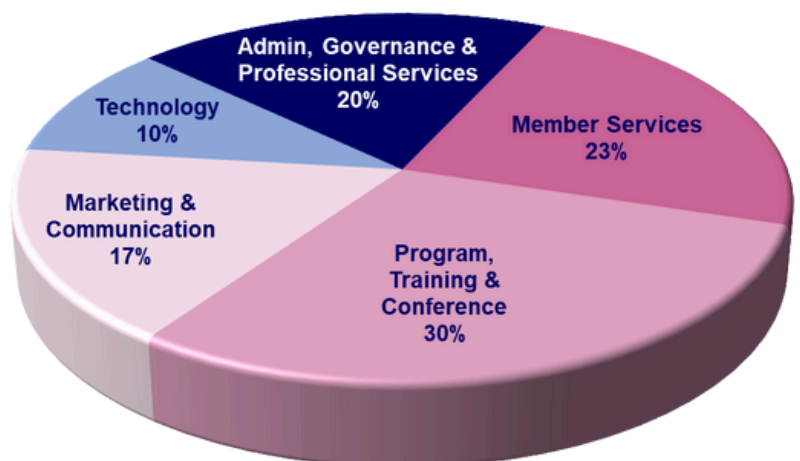
REVENUE SOURCES

Our organization’s work is made possible through a diverse mix of revenue sources, including member dues, individual donations and corporate sponsorships. This diversified support allows us to sustain programs, expand our reach and maximize our impact in the communities we serve.



HOW ARE ACTIVE DUES INVESTED?

Active dues are invested in delivering an unparalleled mother-daughter experience, empowering young women leaders and providing access to innovative programs, world-class speakers and transformative events.



HOW WE INVEST



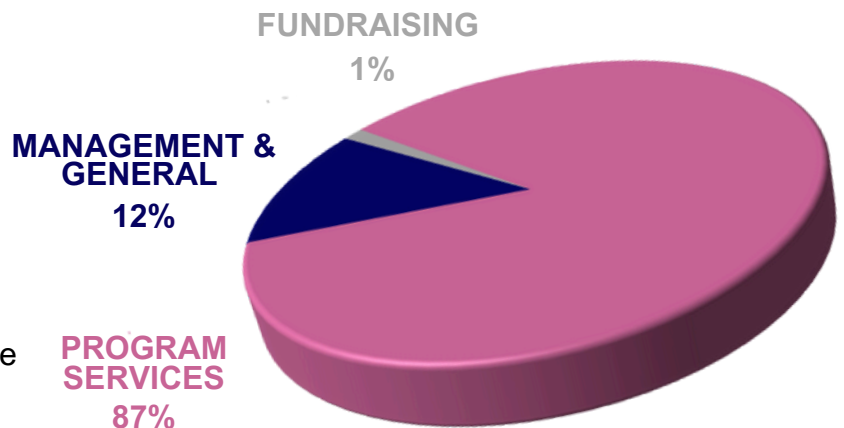
Functional expenses are a way to categorize a nonprofit organization's costs based on the purpose of the expenditure. The goal is to show how the organization is using its funds to advance its mission. Nonprofits in the United States are required to report their expenses by functional classification. The three main categories of functional expenses are: Program Services, Management & General and Fundraising.

FUNCTIONAL EXPENSES

We invest the majority of our funding into Program Services, expenses that directly relate to the nonprofit's mission-driven activities. This is how our membership is able to positively impact their communities.

Management & General consists of overhead costs for the organization's overall operation, such as administrative salaries and office expenses.

Fundraising consists of expenses related to soliciting donations, grants and other financial support.



NCL is a nationally recognized nonprofit organization with outstanding ratings, earning a Platinum Seal of Transparency from Candid and a 4 out of 4 stars rating from Charity Navigator.

EVENTS, PROGRAMS & TRAININGS

This year, our virtual events continued to play a vital role in engaging members across the country. By offering accessible and flexible programming, we brought people together regardless of location, ensuring that all members could learn, connect and contribute.



Virtual events hosted by NCL, Inc.

26 Programs offered specifically for Ticktockers

53 Trainings for chapter leaders

PROGRAM PARTNERS

We collaborate with remarkable women like Myka Meier, Rosalind Wiseman and Cesalina Gracie. From mastering etiquette to learning self-defense and beyond, our exceptional program partners guide us through a diverse array of skills and experiences that foster growth, build confidence and help us realize our full potential.

They create programs specifically tailored for our members and provide training at in person or virtual events throughout the year, ensuring every experience is both meaningful and engaging.



FOREVER NCL



National Charity League, Inc.

A LIFETIME EXPERIENCE

Mothers and their daughters (grades 7-12) participate in an enriching program that embraces our pillars of philanthropy, leadership and culture.

Many continue their journey as alumnae by becoming Sustainers in Forever NCL, demonstrating that the skills, friendships and values cultivated through NCL truly last a lifetime.

CONNECTION AND SUPPORT

Our Forever NCL Sustainer program is thriving with the launch of Sustainer Networks, which brings members together through shared locations, hobbies and interests. Whether it's a professional development group, a social gathering or a cause-driven project, Sustainer Networks offer our members the opportunity to connect on a deeper level and expand their circles within the organization.



13 NETWORKS ESTABLISHED

2024-2025



When Ella and I joined the Space City Chapter, Class of 2021, we began a truly special journey, forming friendships that have lasted a lifetime. Forever NCL has reminded me how much joy comes from connecting, and why I'm passionate about supporting Sustainer Networks as a way to nurture meaningful relationships and strengthen our community. We're excited to re-engage and continue our NCL journey as we embrace this new chapter in life.

- Jill Kaale, Sustainer Support Membership and Retention Lead



HONORING 100 YEARS OF IMPACT

CENTENNIAL CELEBRATION - APRIL 2025

NCL celebrated its 100th anniversary with a once-in-a-lifetime event in Anaheim, CA. Together, we reflected on a century of service and the profound influence of the mothers (Patronesses) and daughters (Ticktockers) whose unwavering commitment has fostered positive change in their communities.

[CLICK TO READ](#)



H
I
G
H
L
I
G
H
T
S



GENERATIONAL LEGACY

Mary, a 98-year-old matriarch who began her NCL journey in 1961, sparked a four-generation legacy that spans nearly 65 years across chapters in California, Oregon and Virginia—a true testament to the enduring sisterhood and spirit of service at the heart of NCL.



COLLEGE & CAREER FAIR

For the first time ever, Ticktockers were able to attend our College and Career Fair in person! They explored career paths, connected with college representatives, learned about sorority life and gained valuable insights on building courage.



MEMBER RECOGNITION

We celebrated over 150 remarkable women with the publication of our Extraordinary Women of NCL book, honoring their legacy of compassion and service. We also introduced the 18 Under 18 Award, recognizing Ticktockers whose leadership and philanthropic impact uplift their communities.

JOY IN ACTION

Our alumnae, also known as Sustainers, joined us at our Centennial Celebration to honor the legacy they helped build and see firsthand how their contributions continue to shape the organization's growth. A special afternoon was dedicated just to them, featuring tea training, a hands-on mixology class and bouquet-making. The spirit of giving didn't end there—each of the 50+ handcrafted bouquets was donated to Walnut Village Retirement Community, a beautiful reminder that NCL's dedication to service continues to thrive.



FAMILY. FRIENDS. FOREVER. FUTURE.

In the year leading up to our Centennial Celebration, we brought the NCL story to life—100 years of history, inspiring moments, unforgettable mother-daughter adventures and the countless ways our members have made a difference. Every tale, every memory, every act of service painted a vivid picture of who we are and what we stand for.



CLICK TO WATCH

LOOKING AHEAD

2025-2026 GOALS

NCL is embracing **growth, innovation** and **inspiration** like never before.



GROWTH

At the heart of our mission is the unique bond between mothers and daughters, and in 2025-2026, we're making it easier than ever for families across the country to experience that connection. Through **NCL Everywhere**, a program of NCL, Inc., more mothers and daughters will have the opportunity to join our vibrant community, participate in meaningful service and develop the leadership skills that will guide them for a lifetime.

INNOVATION

Alongside expanding membership, we're exploring ways to **amplify member voices** and gather feedback to guide the evolution of our organization's strategic plan. Members' perspectives are central to shaping a future that drives meaningful growth, maximizes impact and fosters a sense of genuine belonging—ensuring our organization is both dynamic and responsive to the needs of our community.



INSPIRATION

We're raising the bar with our programming! This year's lineup includes inspiring **keynote speakers** like Deshauna Barber-Echols and Cesalina Gracie, whose stories of leadership, resilience and community impact will motivate our members to dream bigger and serve more passionately. Through these experiences, mothers and daughters alike are encouraged to grow, lead and make a lasting difference in the communities they touch.

NCL is more than an organization—it's a movement that empowers families, strengthens communities and inspires the next generation of women to lead with confidence, compassion and purpose.

SPONSORS

We are grateful to our Centennial Sponsors for helping us celebrate this milestone year. Your generous support enables us to continue developing the leaders, philanthropists and culturally aware young women of tomorrow. Together, we are making a lasting difference in our community.

CENTENNIAL CELEBRATION SPONSORS

SILVER SPONSORS



BRONZE SPONSORS



EMPOWERLY

SUPPORTERS



PINK CARPET LUNCHEON TABLE SPONSORS

Linda Martens
Lynne Zuckerman



Lily Churchwell



Rachel Wilkinson

A heartfelt thank you to National Panhellenic Conference (NPC) for providing scholarships to two deserving NCL members as they embark on their next chapter in college.

"The thought of leaving home and going to this large college can be overwhelming but I think the core values that NCL has taught me can help me find my place and grow."

DONORS

Every name listed here represents more than a donation—it represents belief in the next generation of bold and compassionate female leaders. Thanks to our individual and family donors, our members are learning, serving and leading in ways that leave a lasting mark on their communities. We are deeply grateful for your support in making this possible.

LIFETIME

DIAMOND \$100,000+

Dion Family Foundation in honor of Jan Dion*

Harlan and Linda Martens* in honor of the Linda Martens Ticktock Inspire Innovation Fund

PLATINUM \$50,000+

Denise Lilley*

Joanne M. Lilley Fund of Oregon Community Foundation

Lynne Zuckerman*

GOLD \$10,000+

Beverly D. Hottois

Cheryl LaMee*

Linda Blaskowsky

Michele Crabtree*

Robin L. Doherty

Sandra Livingston

**Past National President*

2024-2025 DONOR HONOR ROLL

\$5,000+

Ann Gibbins

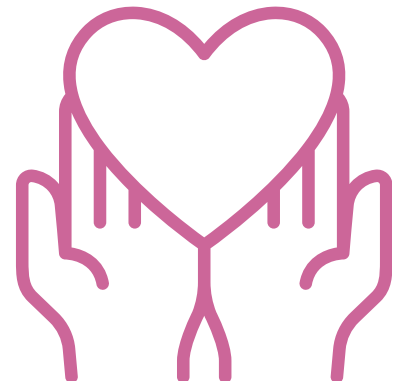
Anonymous

Denise Lilley

Joanne M. Lilley Fund of Oregon Community Foundation

Linda Martens

Michele Crabtree



\$1,000-\$4,999

Aimee Gillum
 Angela Roehm
 Beverly D. Hottois
 Bonnie Vogel
 Catherine Kauffman
 Cheryl LaMee
 Debbie May
 Dieema Wheaton
 Elizabeth Rice
 Eva Mettrey
 Jennifer Larsen
 Jonell E. Mertens
 Joyce Jackson
 Laura Bolin
 Laura den Boer
 Linda Blaskowsky
 Lisa Garosi
 Nancy Dean
 Pamela Johannsen
 Susan Partington
 Tiffany Daykin-Armijo

\$200-\$999

Abby Ray
 Andrea Barry
 Andrea Carnevale
 Anne-Marie Singer
 Annie Graham
 Blanca Johnson
 Cheryl Hollabaugh
 Cynthia Knight
 Dara Wilk
 David Kline
 Gina Berson
 Jennifer Riley
 Joanne Pons
 Kathleen Terry Guy
 Keli Luce
 Kim Lyons

Kim O'Meara
 Kristen Sanger
 Kristin Rizzo
 Kristina Hehrne
 Kristina Marnell
 Linda Edwards
 Lynn McGEhee
 Lynne Zuckerman
 Lyrna Schoon
 Meredith Rodman Druyen
 Montserrat de Muller – In
 Memory of Ann Spencer
 Pamela Meuter
 Shirin Khanideh
 Tanya Sterling
 Tia Kline
 Valerie Turchiano

\$25-\$199

Abigail Gillum
 Agnes Wilbur
 Alexa Johnson
 Alice Dungey
 Alison Chen
 Alissa Speziale
 Allison Trama
 Amanda Myers
 Amber Dudley
 Amber Lightbond
 Amy Bremner
 Amy Frederick
 Amy Giachetti
 Amy Kozelsky
 Amy Lanier
 Amy Wood
 Andrea Hagemann
 Andrea Hofmeister
 Andrea Larson
 Angela Brennan

Angie Cox
 Anita KramerGorder
 Ann Fisher
 Anne Hart
 Ariana Henderson
 Arleen Jones
 Ashli Montgomery
 Athena Light
 Barbara Trentalange
 Becky Mahalec
 Bertha Martinez-Carmona
 Beth Antimarino
 Beth Jameson
 Beth Mool
 Beth Mortenson
 Bettina Reiter
 Bora Song
 Brandi Nishnick
 Brandy Gerhardt
 Brenda Moss
 Brenda Polivka
 Briana Warner
 Bridgette B. Coleman
 Cameron Kauffman
 Carole Comeau
 Caroline Thompson
 Carrie Butler
 Cassandra Balli
 Cassandra Garber
 Cassandra Salinas
 Catherine Carlton
 Catherine Hamlin
 Catherine Herr
 Cecilia Kim
 Chandra Akella
 Cheryl Lewis
 Chetna Bail
 Christina Alwood
 Christina Gray
 Christina Self

Christy Holman
Christy Teffenhart
Colleen Dangoia
Colleen Ernst
Cortney Allen
Cristina Feldott
Cristina Warren
Cydonii Fairfax Miles
Cynthia Miller
Cynthia Putnam
Dacota Haselwood
Daina Senatore
Dana Carpenter
Dana Dunbar
Dana Ford
Danaree Allgood
Danette Cubic
Dawn Serpas
Deborah Speranzo
Debrs Wilson
Denise Coffaro
Diane Murphy
Ed Vanderbilt
Elizabeth Dreckman
Elizabeth Leykum
Elizabeth Reese
Elizabeth Rytlewski
Elizabeth Zernik
Ellen Saliba
Emily Burnison
Erica Hokenson
Erica Johnston
Erika & Shea McCarthy
Erin Cochran
Erin Maffia
Fatina Santos-Johnson
Gina Benderson
Gina Lindell
Ginger Trowbridge
Grace Alvarez

Grace Gibbons
Heather Johnson
Heidi Akin
Hilary Flanagan
Hope Gillis
Hwayoung Lee
Jakeen Johnson
Jan Schinhofen
Jane Feinberg
Jane Scadina
Janet Stuart
Jen Piccotti
Jennifer Alderdice
Jennifer Aldous
Jennifer Baird
Jennifer Douglas
Jennifer Runyan
Jennifer Thibideaux
Jennifer Walker
Jenniffer Jamison
Jenny Peel
Jenny Wilson Schwartz
Jessica H. Henderson
Jessica Harris
Joanne Cameron
Jocelyn Seamans
Jodi Curry
John Rustan
Jolene Lindner
Judy Salmon
Julia Huseman
Julia Lombardi
Julie Lott
Kara Calhoun
Karen Romo
Karen Sheng
Kari Billiter
Katherine Mayne
Kathleen Agbayani
Kathleen Jackson

Kathrine McDonald
Kathryn Hudson
Kathryn Juneau
Katie DeVaul
Kavya Yalamanchili
Kelly LeAnn Ebel
Kerry Ausman
Kimberly Alessio
Kristen Slowe
Laura Byrd
Laura Forster
Laura Hunter
Laura Matthews
Laura Moon
Lauren Palagi
Lee Gaudreau
Lelia Sprague
Leslie Butera
Letitia Fox-Varshavsky
Leyla Levitsky
Liana Plumpton
Lilieth Conolly
Lindsay Long
Lisa Pisacane
Lisa Vulinec
Lisbeth Ceballos
Liz Bacchi
Liz Bogard
Lori Hansen
Lyn Rodriguez Neisius
Lynda Nicholson
Lynn Jochim
Lynn Petillo
Mabelle Ashe
Maida Soghikian
Marcia Machens
Marianne Ford
Marie Derks
Mariko Hama

Marilyn Lapkass
Marilyn Lindner
Marta Pemberton
Martha McDaniel
Mary Arnold
Mary Beck
Mary Ellen Waller
Mary Healy
Mary Tricamo-Park
Marybeth Wilkerson
Maury Juliao
Maya Baba
Megan Nicholson
Megan Redfield
Melisa Blum
Melissa Ault
Meredith Weymer
Micaelle Udvare
Michelle Brown
Michelle Lindley
Michelle Small
Milton Chapter Foundation
Sustainers
Mona Wasef
Monica Condon
Monika Davis
Monique Causey
Natalie Arnett

Neva Ignatow
Nicole Neal
Nicole Picht
Nikci Kephart
Noelle McDaniel
Paulette Boyle
Payton Fuller
Pennie Langford
Peter DSouza
Radha Murphy
Rania Cruz
Raz Akhlaghi
Rebecca Gindele
Rebecca M Pletz
Rhonda Clark McNairy
Robin L. Doherty
Robin Laks
Rosalba de la Fuente
Sallie Oliphant
Sandra Gutierrez
Sandra L Rios
Sara McCargo
Sara Jane Gillett
Sarah Matthews
Shana DiLauro
Shannon McGrath Sasz
Shilpa Chunchu
Soojin Miles

Stacey Weir
Stefanie Killian
Stefanie Lundbom
Steph Magers
Stephanie Kerwin
Suesan Arthur
Susan Carroll
Susan Gledhill
Susan Polizzotto
Suzanne Kramer
Suzanne Russell
Tammy Brionez
Telesa Jones
Telisa Schelin
Terri Harrison
Theanne Chivily
Theresa Boutross
Tiffany Utterson
Tracy Engerman
Tricia Wirth Gregory
Uteaka Knapp
Vanessa Yessner
Victoria Howe
Wendelle Lewis Sr
Wendy Gellman
Whitney Toms
Winnie Gan
Yadi Coto

THANK YOU TO ALL OF OUR GENEROUS DONORS!



THANK YOU!

WITHOUT YOU, THIS WOULD NOT BE POSSIBLE!

Thank you to our **Members** for your continued support, participation and contributions to NCL. Together, we are making a difference, strengthening communities and empowering mothers and daughters!

Thank you to our **Board of Directors** for your strategic thinking, dedication and guidance. Your leadership, vision and unwavering commitment shape the path to success for our organization!

Thank you to our **Staff** for your hard work, professionalism and passion. Your contributions are invaluable, and we couldn't do it without your support!

Thank you to our **National Volunteers** for your generosity, energy and time. Your willingness to serve, share your talents and champion our mission inspire us each and every day!

Thank you to our **Partners** for your commitment, service and action. Your expertise and reach are invaluable as we work together to build stronger, more resilient communities.

Thank you to our **Sponsors and Donors** for your partnership, kindness and support. Because of you, we are able to continue making an impact nationwide.



2025-2026 NCL, Inc. Board of Directors

2024 - 2025

